

Cardiac First Response

Clinical Practice Guidelines

Published 13/12/2007



Comhairle Chúram Éigeandála Reamhospidéal
Abbey Moat House,
Abbey Street,
Naas, Co. Kildare

www.phecc.ie

T: (045) 882042
F: (045) 882089
info@phecc.ie



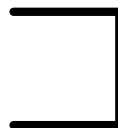
Cardiac First Responder
(Level 1) for which the CPG pertains



Occupational First Aider
(Level 2) for which the CPG pertains



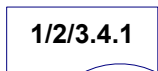
Emergency First Responder
(Level 3) for which the CPG pertains



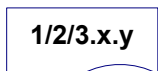
A parallel process
Which may be carried out in parallel with other sequence steps



A cyclical process in which a number of sequence steps are completed



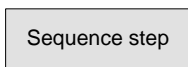
CPG numbering system
1/2/3 = clinical levels to which the CPG pertains
x = section in Education and Training Standards (2007)
y = CPG number in sequence



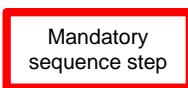
A direction to go to a specific CPG following a decision process
Note: only go to the clinical levels that pertain to you, the CPG will therefore be referred to only by section No. (x) and sequence No. (y)



A clinical condition that may precipitate entry into the specific CPG



A sequence (skill) to be performed



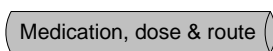
A mandatory sequence (skill) to be performed



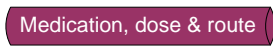
Ring ambulance control



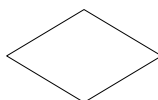
Request an AED from local area



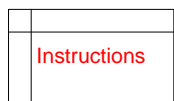
A medication which may be administered by a CFR
The medication name, dose and route is specified



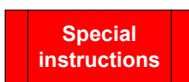
A medication which may be administered by an EFR
The medication name, dose and route is specified



A decision process
The Responder must follow one route



An instruction box for information

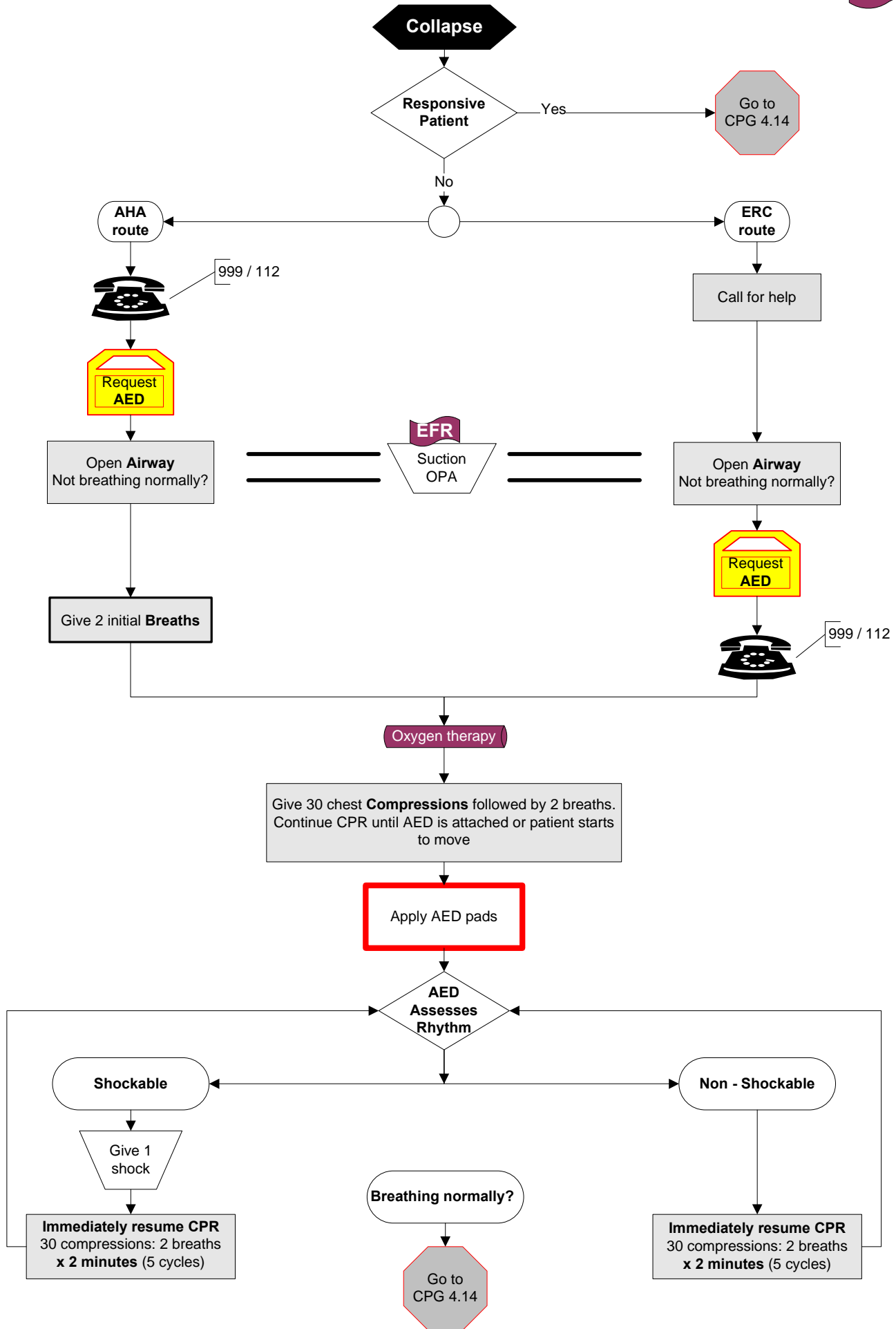


Special instructions
Which the Responder must follow

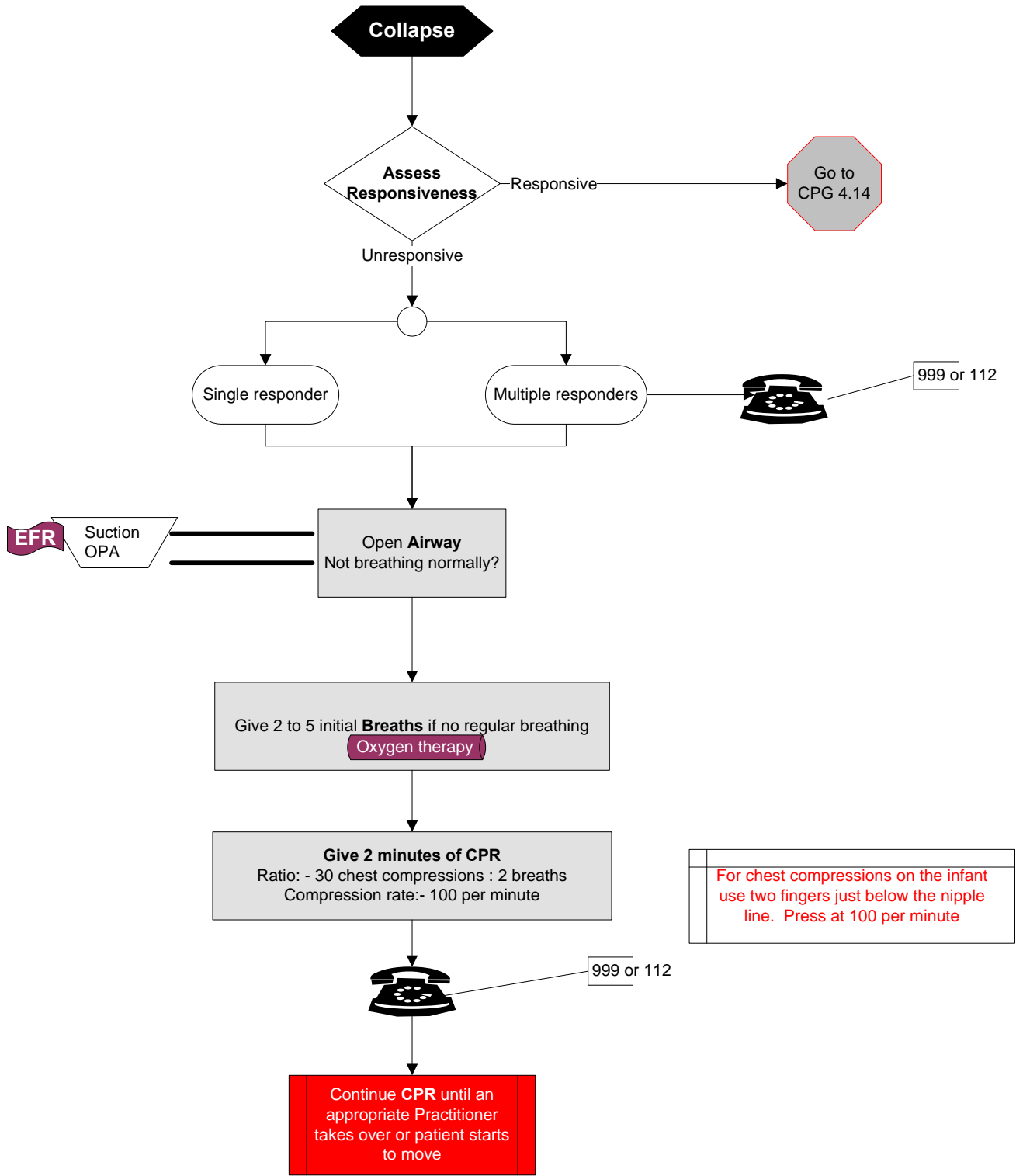


A skill or sequence that only pertains to EFR

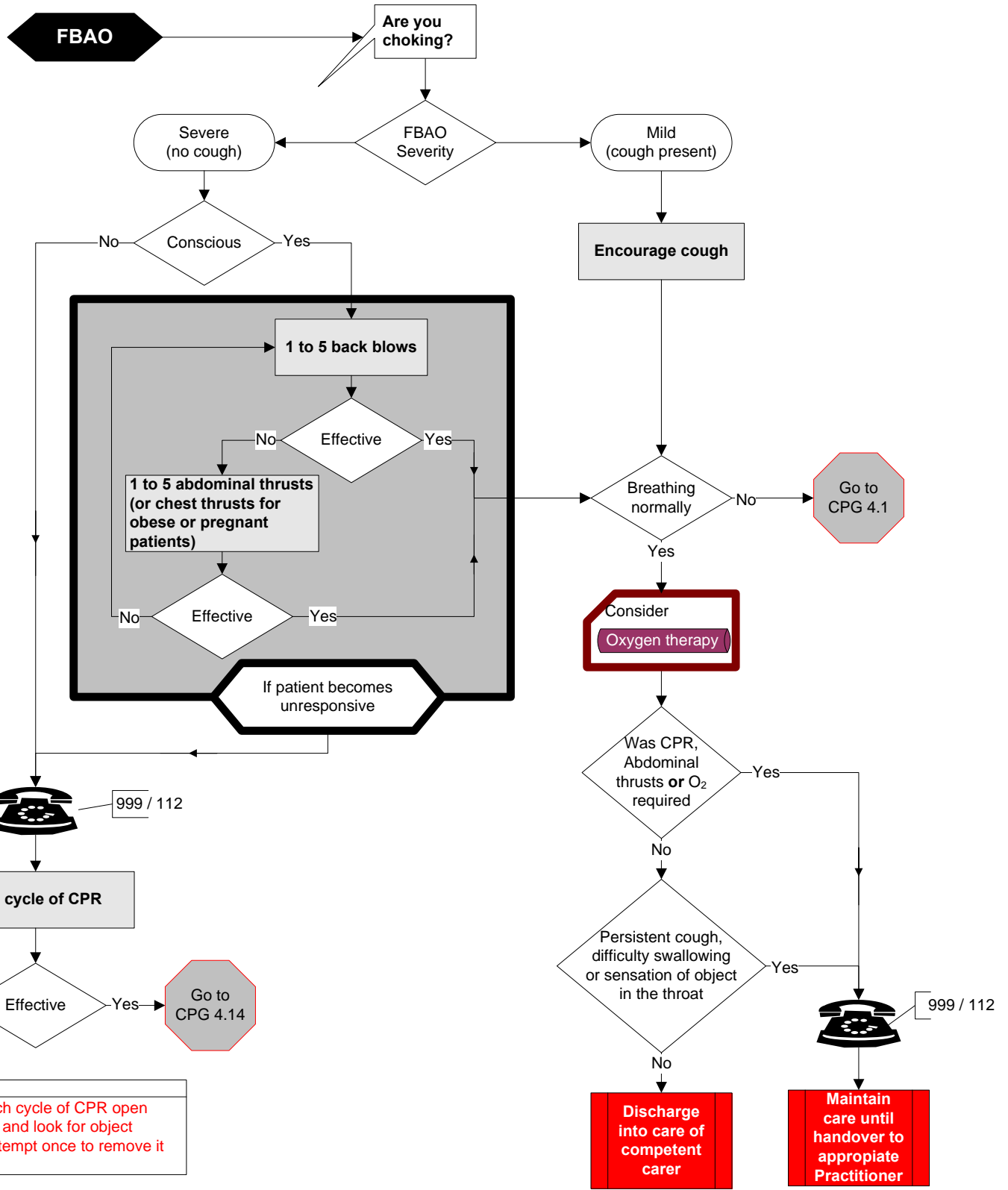
Basic Life Support – Adult (≥ 8 years)



Basic Life Support – Infant & Child (4 weeks to < 8 years)



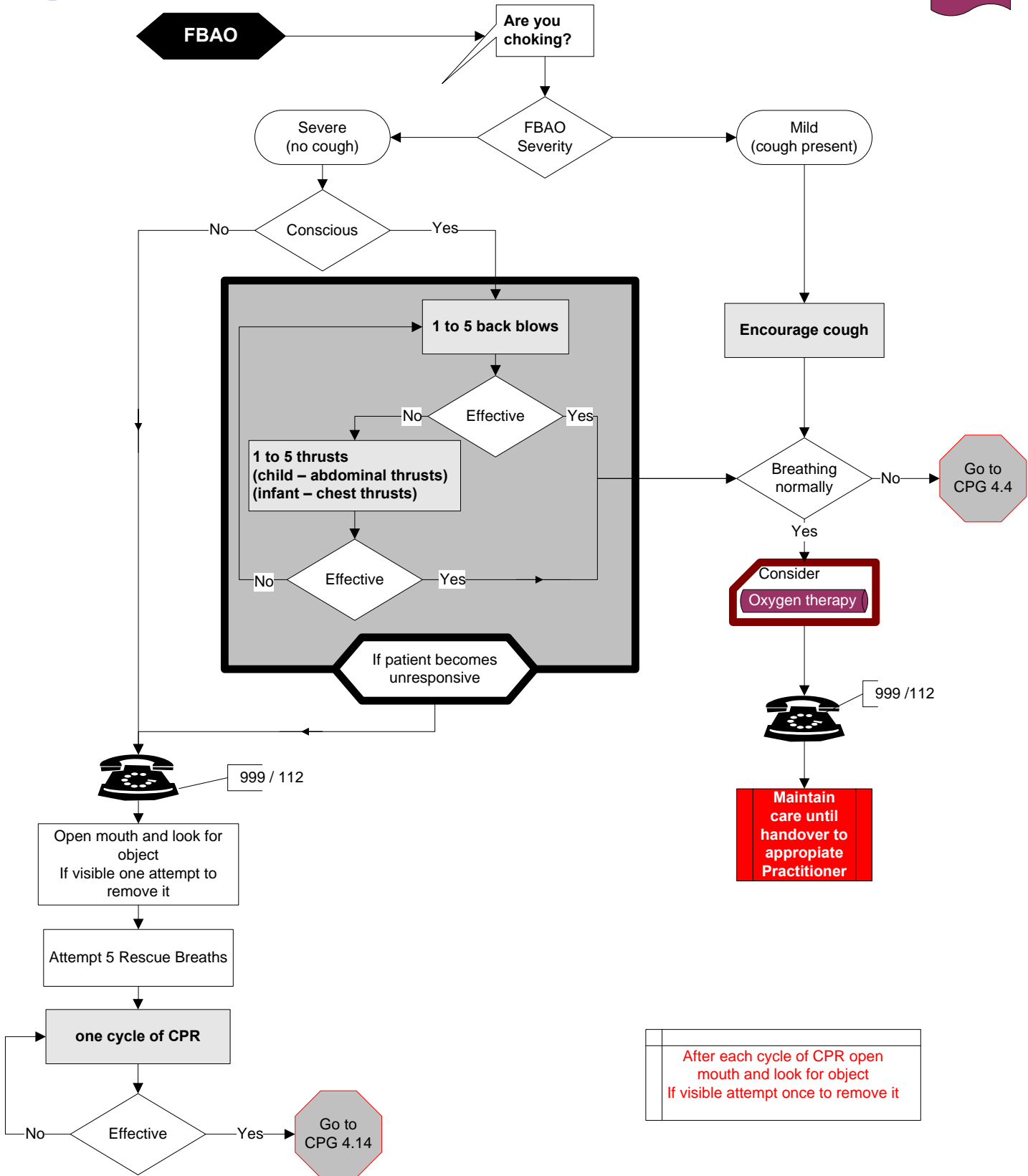
Foreign Body Airway Obstruction - Adult



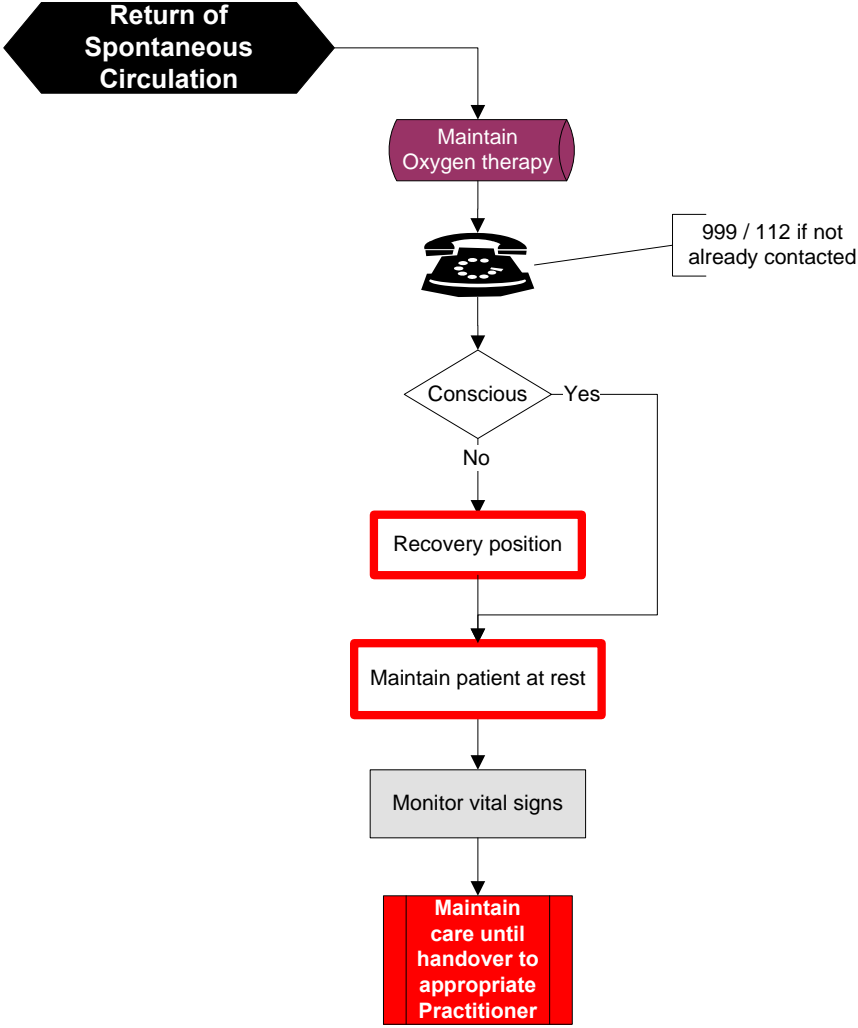
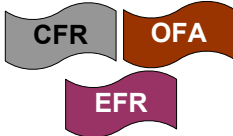
Reference: International Liaison Committee on Resuscitation Guidelines 2005

- ILCOR: Chest thrusts, back blows, or abdominal thrusts are effective for relieving FBAO
- AHA: Chest thrusts, back slaps and abdominal thrusts are effective for relieving FBAO, for simplicity in training we recommend that abdominal thrusts be applied. If ineffective, chest thrusts may be applied. Chest thrusts may be used for obese or late stage pregnant patients
- ERC: The likelihood of success is increased when combinations of back blows or slaps, and abdominal and chest thrusts are used

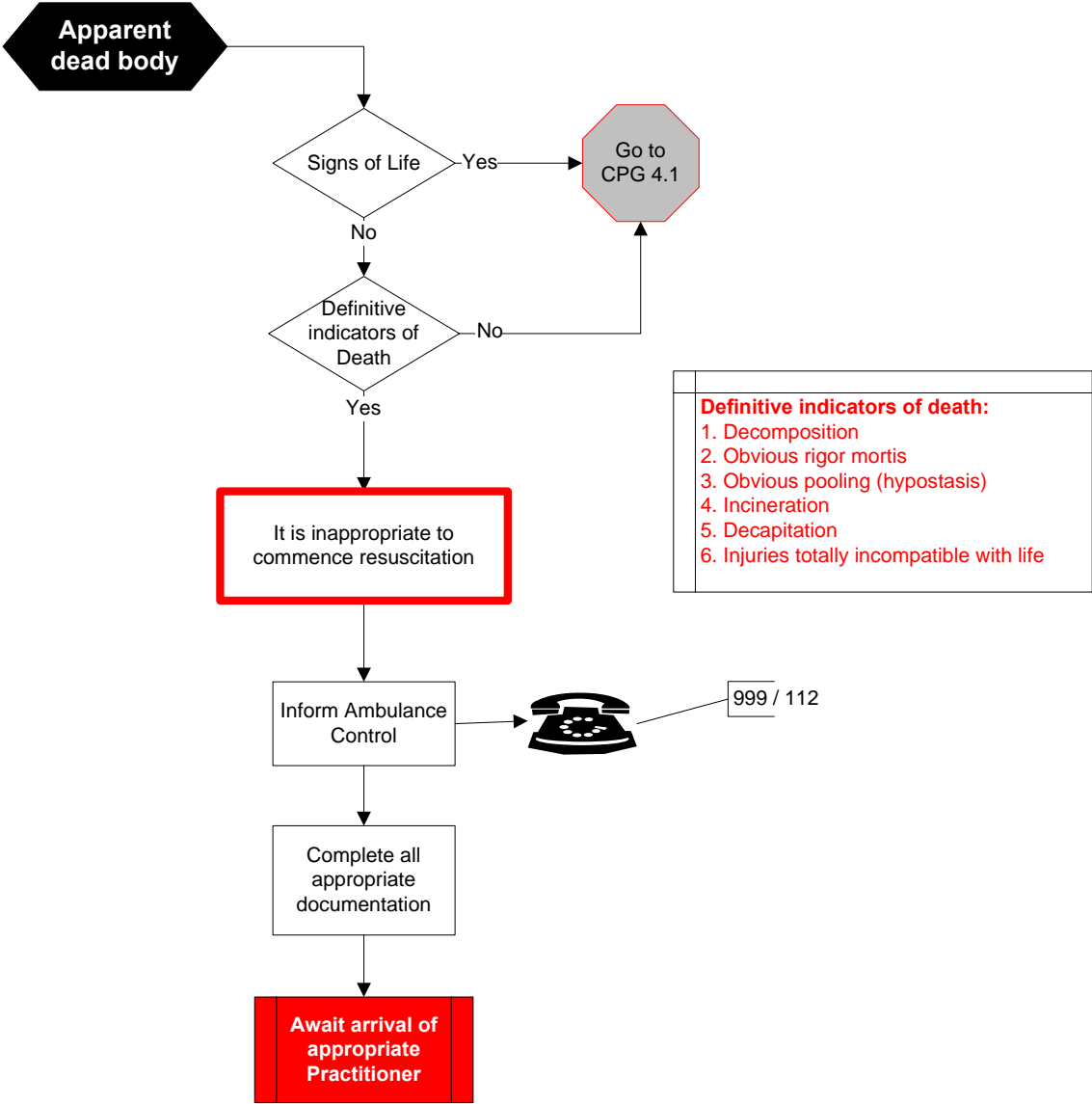
Foreign Body Airway Obstruction – Paediatric (≤ 13 years)



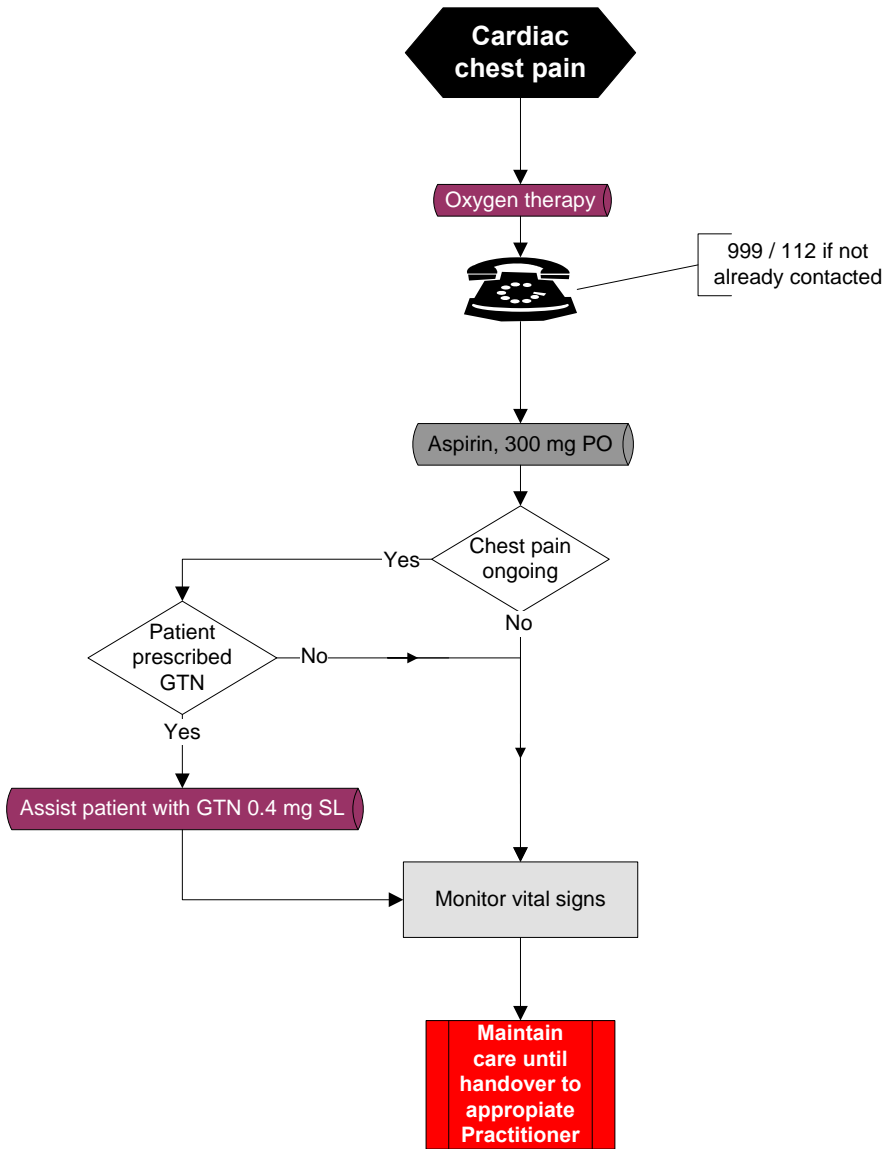
Post Resuscitation Care - Adult

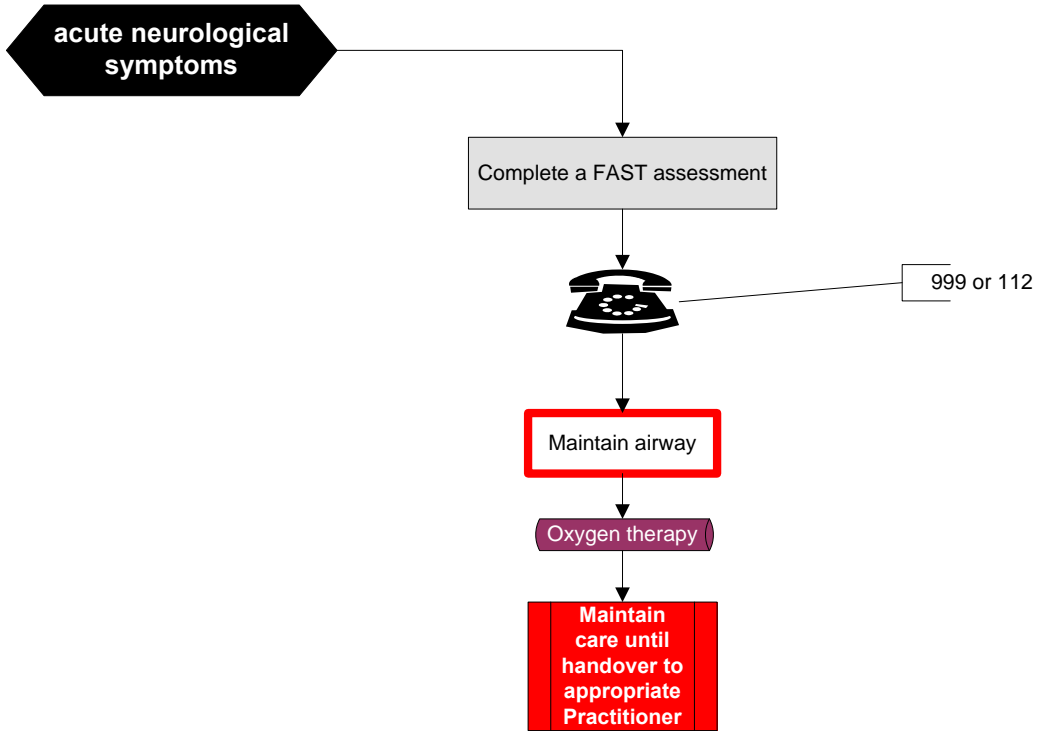


Recognition of Death - Resuscitation not indicated



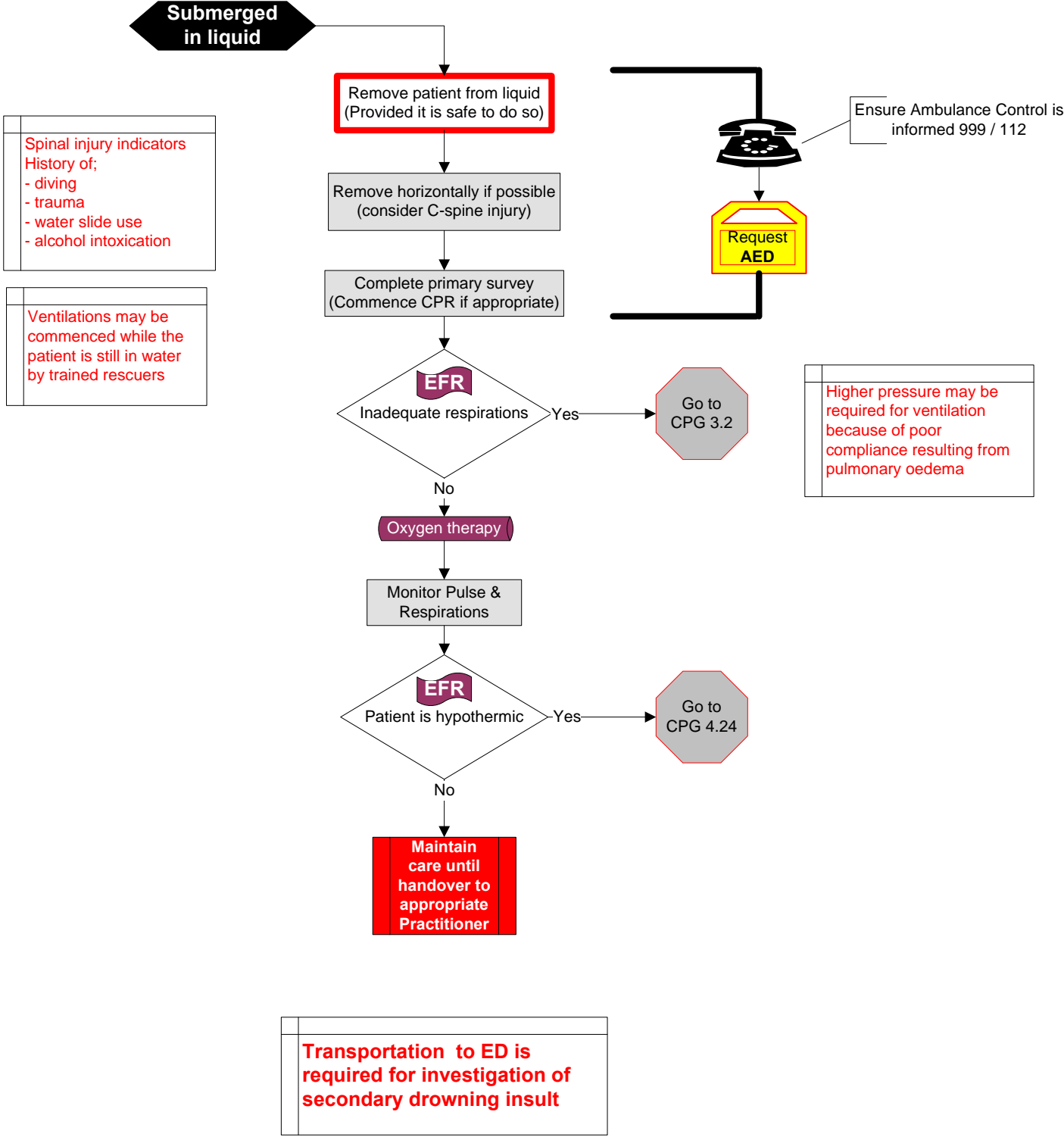
Cardiac Chest Pain – Acute Coronary Syndrome





- F – facial weakness**
Can the patient smile?, Has their mouth or eye drooped? Which side?
- A – arm weakness**
Can the patient raise both arms and maintain for 5 seconds?
- S – speech problems**
Can the patient speak clearly and understand what you say?
- T – time to call 112 now if positive FAST**

Submersion incident



Reference: Golden, F & Tipton M, 2002, Essentials of Sea Survival, Human Kinetics
Verie, M, 2007, Near Drowning, E medicine, www.emedicine.com/ped/topic20570.htm
Shepherd, S, 2005, Submersion Injury, Near Drowning, E Medicine, www.emedicine.com/emerg/topic744.htm